



## PROFESSIONAL CONVENTIONAL GRAVITY FEED SPRAY GUN

- Totally redesigned GFG gun for professional use.
- Renowned DeVilbiss atomisation quality and even paint distribution.
- Utilises new air valve design for ultra smooth triggering and control.
- Rugged drop forged body with anodised finish for protection.
- A choice of two advanced technology air caps to suit solids and metallics.
- Three fluid tip sizes for varying viscosities and control preferences.
- New, more ergonomic gun body with improved fit, feel, comfort and control.
- Faster, easier maintenance from user-friendly fittings and adjustments.

Part Number Explanation

**GFGPRO** - **C1** - **XX**

Model

Air Cap

Fluid Tip



**No C1  
Air Cap**



**No C2  
Air Cap**



### Specification

Air Inlet Pressure	C1: 2.5 - 3.0 bar (30 - 45 psi) C2: 2.5 - 4.0 bar (30 - 60 psi)	Cup Capacity	560 mls
Air Consumption	C1: 300 l/min (10.6 cfm) @ 3.0 bar C2: 305 l/min (12.8 cfm) @ 3.0 bar	Weight (gun & cup)	768 gms
Air Inlet Thread	1/4" Universal	Air Cap & Ring	Plated Brass
		Fluid Tip	Stainless Steel
		Fluid Needle	Stainless Steel



DGIPRO-502-BAR

### GFG-Pro Spray Gun Kits

When ordering please specify the air cap of your choice (C1 or C2) and the tip size of your choice (14, 16 or 18).

Part No Examples	Description
GFGPRO-C1-14	Gravity Gun & Cup - C1 air cap and No. 14 fluid tip
GFGPRO-C1-16	Gravity Gun & Cup - C1 air cap and No. 16 fluid tip
GFGPRO-C2-18	Gravity Gun & Cup - C2 air cap and No. 18 fluid tip

Kit includes GFG PRO Gravity gun, cup, paint filter, brush and multi-fit spanner



MPV-60-K3

### Accessories

Part No	Description
PROC-120-C1-K	C1 Air Cap and retaining ring
PROC-120-C2-K	C2 Air Cap and retaining ring
PROC-220-**-K	Fluid Nozzle Size Numbers 14, 16 & 18
GFGPRO-320-K	Fluid Needle
PRO-415-1	Spray Gun Service/Repair Kit
SPN-8-K2	Torx & flat blade Screwdriver - Trigger & Needle Packing
SN-28-K	Spanner Ring for fluid tip and open end for valves/inlet
DGIPRO-502-BAR	Digital Gauge - Reads in bars
MPV-60-K3	Male Quick Detach Uni Swivel - fits to gun air inlet
HAF-507-K12	Lightweight in-line air filter (pack of 12)
4900-5-1-K3	Pack of three cleaning brushes
KGP-5-K5	Pack of 5 gravity cup filters for GFC cups

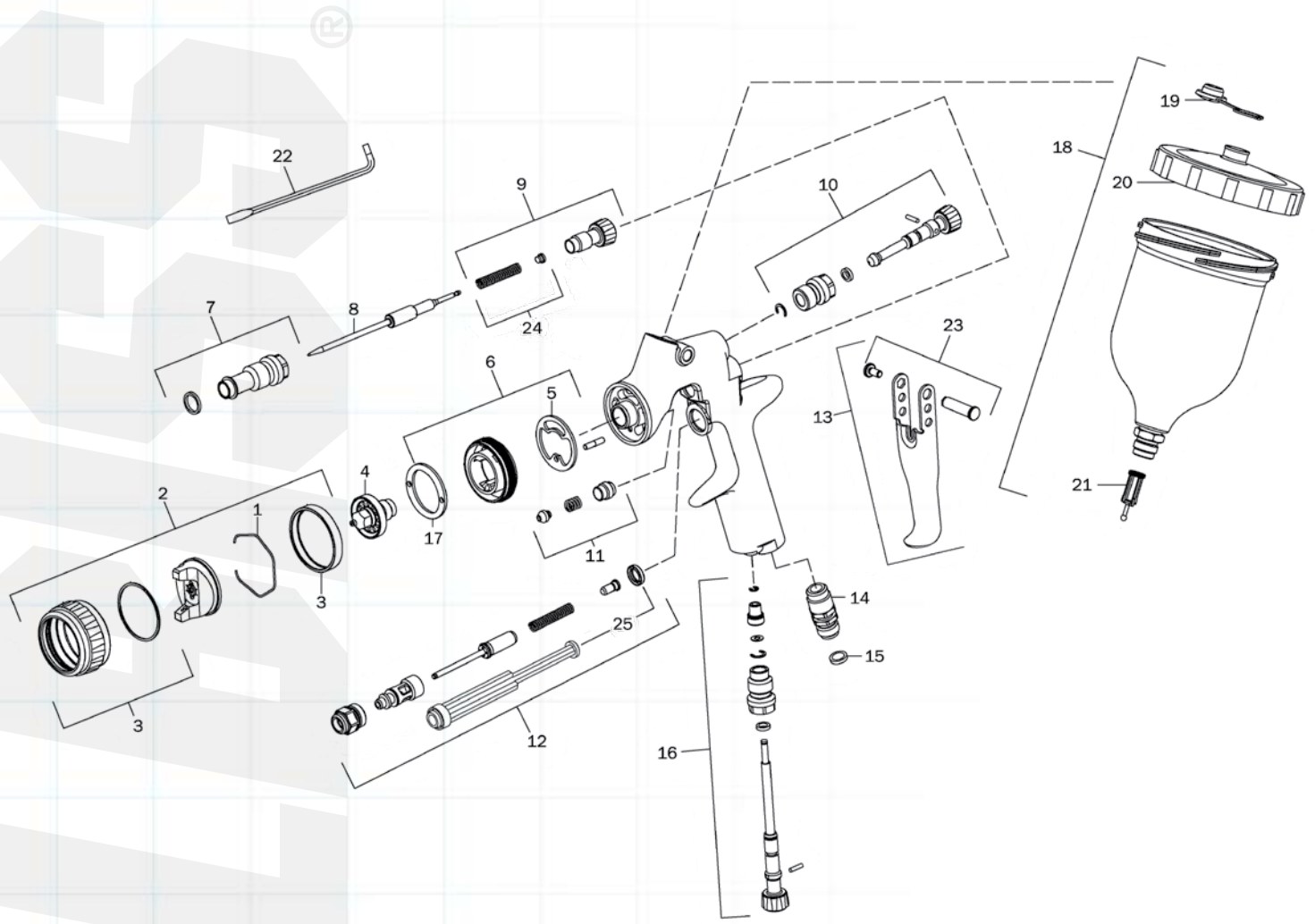


HAF-507-K12



PRO-415-1

\*\* = Fluid tip size



Ref No	Description	Part Number
1	Air Cap Retaining Clip	JGA-156-K5
2	C1 Aircap & Ring	PROC-120-C1-K
	C2 Aircap & Ring	PROC-120-C2-K
3	Air Cap Retaining Ring & Seals	PRO-405-K
4	Fluid Nozzle	PROC-220-**-K
5	Spray Head Seal (kit of 2)	SN-18-1-K2
6	Spray Head & Seal Kit	SN-17-1-K
7	Body Bushing & Seal	SN-6-K
8	Fluid Needle	GFGPRO-320-K
9	Fluid Adjusting Knob, Spring & Pad Kit	PRO-3-K
10	Spreader Valve Assembly	PRO-402-K
11	Packing, Spring & Packing Nut Kit	SN-404-K
12	Air Valve Replacement Kit	SN-402-K
13	Trigger, Stud & Screw Kit	SN-21-K

Ref No	Description	Part Number
14	Air Inlet	SN-40-K
15	Colour ID Ring Kit (4 Colours)	SN-26-K4
16	Airflow Valve	PRO-411-K
17	Baffle plate	SN-41-K
18	Gravity Cup Kit	GFC-501
19	Drip Check Lid (kit of 5)	GFC-2-K5
20	Gravity Cup Lid	GFC-402
21	Filter	KGP-5-K5
22	Torx Key	SPN-8-K2
23	Trigger Stud & Torx Screw (kit of 5)	SN-405-K5
24	Needle spring and pad kit	SN-4-K3
25	Air valve seal & service tool	SN-34-K5
<b>Service Parts</b>		
	Spray Gun repair kit	PRO-415-1
	Seal and Pin Kit, kit of 5	GTI-428-K5